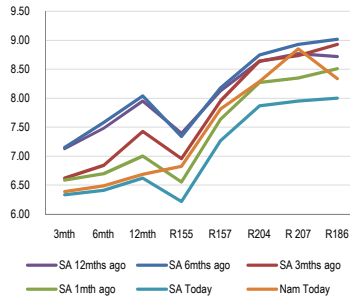
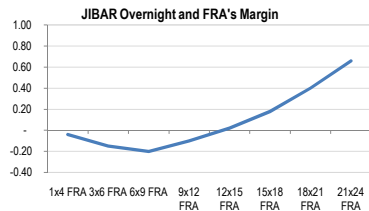


Recent SA / Namibia Economic Data

Inflation was lower now than the Reserve Bank had expected, but it would take a "forward-looking" approach when it decides on interest rates next week, the Bank's governor, Gill Marcus, said last night. (BusinessDay)

SSS Yield curve

Market expected interest rate view

Indicative Investment Rates
Top Namibian Bank deposit rates

Call	5.43%
1 mth	6.16%
3 mths	6.29%
6 mths	6.39%
12 mths	6.59%

SSS Money Market Index

Today	139.68
Previous	139.66
Daily change (%)	0.02%

Treasury Bills: Namibia

	Avg Yield	Marg Yield	EAY
3 mth TB's	6.43%	6.56%	6.59%
6 mth TB's	6.50%	6.52%	6.61%
12 mth TB's	6.53%	6.59%	6.53%

Namibia Government Bonds

	SA BM	SA	
GC12	R155	6.22%	6.83%
GC15	R157	7.27%	7.82%
GC18	R204	7.87%	8.29%
GC24	R186	8.00%	8.34%

Corporate Bonds

OL001	R157	11.52%
OL002 (3 mths Jibar)	6.34%	10.94%

Commercial Banks

FNB17	GC12	7.28%	
BW19	7.13%	R201	9.08%
BW20	7.27%	R157	9.01%
SBNK11	GC12	7.21%	
SBNK14	7.27%	GC15	8.57%
SBNK16	7.27%	GC15	8.82%
SBN2016	GC12	7.43%	

State Owned Enterprises

NMP19N	GC18	8.87%	
NMP20 (R207)	7.96%	8.86%	
RFA10	6.73%	6.73%	
RFA16	7.27%	GC15	8.12%
TCN15	7.27%	GC15	8.76%
TCN16	7.27%	GC15	9.02%
TCNF01 (3 mths Jibar)	6.34%	7.85%	
TN15	7.27%	R157	8.90%
TCNF02 (3 mths Jibar)	6.34%	7.83%	

Upcoming Treasury Bill tenders & Bond auctions

364 Day TB	09-Sep-10
IRS	16-Sep-10
182 Day TB	23-Sep-10

Namibia/SA key economic indicators

	SA	Namibia
NS / USD		7.21
NS / Euro		9.26
NS / British Pound		11.11
Consumer Price Index (CPI)	3.70%	4.60%
Prime rate	10.00%	11.25%
Prime rate (BWHK) As from 8 July 2010		10.75%
Private Sector Credit Extension	1.98%	8.80%
Bank Rate	6.50%	7.00%

Contact Information

Tel +264 (61) 254 194 / Fax +264 (61) 254 193
 Bruce Hansen bh@sss.com.na
 Shineine Jansen sj@sss.com.na
 Amanda Meyer am@sss.com.na

Disclaimer

The report is provided by Simonis Storm Securities (Pty) Limited ("SSS") solely for the recipient's information. The user assumes the entire risk of any use made of this information. Its contents are based on information obtained from sources believed to be reliable. SSS makes no representation and accepts no responsibility or liability as to its completeness or accuracy of any information, facts and/or opinions contained in the report.